

# kits & partitions

Adapting workspaces to the health crisis to better protect your teams and your clients

[www.zone-expo.ca](http://www.zone-expo.ca)

**ze**

PRODUCTS  
MADE IN  
CANADA



## 2 Preface

The World Health Organization recommendations to prevent the spread of the virus in the workplace include

- Ensure that the workspace remains clean and hygienic
- Promote regular and thorough hand washing to staff, suppliers and customers
- Promote good respiratory hygiene in the workplace: display posters, provide hand sanitizer, masks and paper towels

**Consult the complete document: Getting your workplace ready for Covid-19**

Our solution: simple and affordable kits to

- Promote prevention guidelines
- Provide hand sanitizer, masks and paper towels
- Direct traffic
- Provide changing areas
- Partition desks, dividers





# 3

## Preface

4-desk divider kit  
panoramic\*  
h-line

Portable partition kit  
**contour.**

2-desk divider kit  
panoramic\*  
h-line

Portable half-wall  
partition kit  
panoramic\*  
h-line

Welcome kit  
& Hygiene station kit  
**one.r1 / xtension.squared**  
**3x2 /**  
**hard case.M counter**

Stationary partition kit  
panoramic\*  
h-line

Portable changing room kit  
**contour.**

& Stationary changing room kit  
panoramic\*  
h-line

1-desk barrier kit  
**contour.**



4

# Welcome kit

- 2 **one.r1** retractable bannerstands (31.5" x 79")
- 1 **xtension.squared 3x2** pop-up fabric display
- 1 **hard case.M counter** kit

**1749\$ / kit**



Easily create your design: the artwork file already includes prevention guidelines

Send us your logo and background and we will customize it for you!



Adapting workspaces to the health crisis

# Hygiene station kit

3 essential kits to display prevention guidelines and distribute hand sanitizer



Hygiene station kit A

- 1 **one.r1** retractable bannerstand 31.5" x 79" (80 x 200 cm) with graphic
- 1 **hard case.M counter**

Budget-friendly version with **boost.** banner stand and vinyl graphic also available

**670\$**



Hygiene station kit B

- 1 **one.r1** retractable bannerstand 31.5" x 79" (80 x 200 cm) with graphic

Budget-friendly version with **boost.** banner stand and vinyl graphic also available

**170\$**



Hygiene station kit C

- 1 1' x 2' **wall.frame** (305 x 610 mm) SEG Fabric graphic

**139\$**



6

# Welcome kit & Hygiene station kit

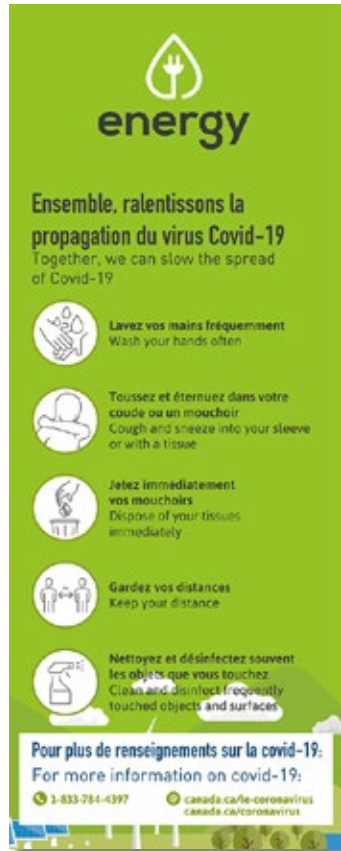
Your design



Easily create your design: the artwork file already includes prevention guidelines

Send us your logo and background and we will customize it for you!

**670\$**  
per kit



1 **one.r1** retractable bannerstand  
31.5" x 79" (80 x 200 cm)

Budget-friendly version with **boost.** banner stand and vinyl graphic also available



1 **hard case.M** counter



## Portable partition kit

10 **contour.** 5 x 6.5 foot walls with double-sided pillowcase graphics a total of 50 linear feet



Panels can be connected at 45°, 90° or 180° to partition custom spaces

Lightweight, stable, and sets up in just a few minutes



Ask for your quote: 1(844)966-3976



# Stationary partition kit

50 linear feet of <sup>panoramic\*</sup>  
<sub>h-line</sub> dividers using 38"x 93" panels  
Double-sided graphics. Available for rent or purchase



NEW: panoramic h-line panels with transparent sections  
Panels can be connected at 90° or 180°  
Delivered in a transport crate. Graphics are pre-installed for quick assembly.

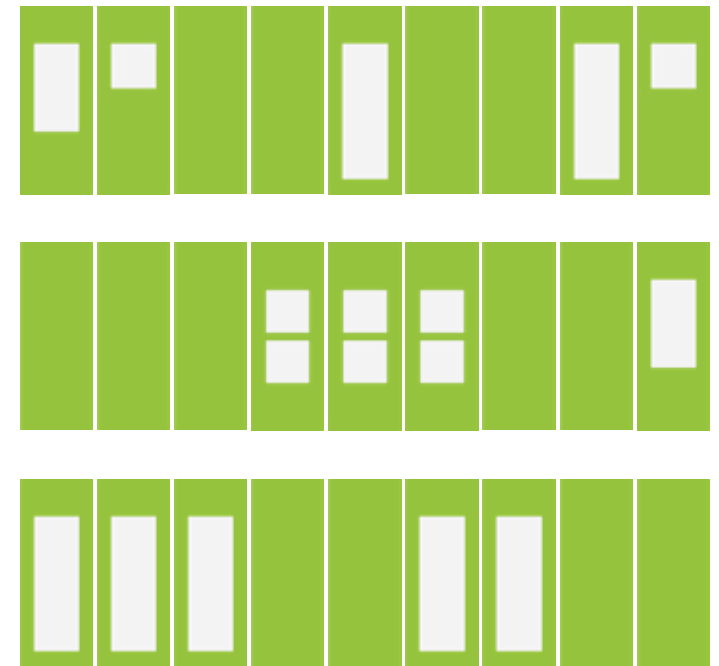


Ask for your quote: 1(844)966-3976



# Stationary partition kit

NEW: Combine 4 transparent partition models to allow light to pass through while remaining hygienic



Many accessories and options available: TV, shelves, doors, lights, etc.



# 10 Stationary partition kit

panoramic®  
n-line

Different textures available

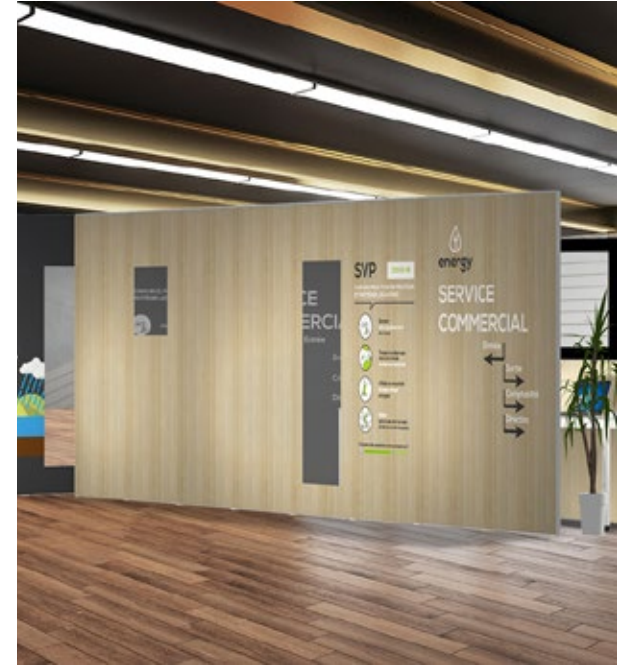
Adapting workspaces to the health crisis



Concrete



Brick



Wood



White Brick



Stone



Ivy



11

# Portable half-wall partition kit

50 linear feet of half-wall <sup>panoramic</sup> <sub>in-line</sub> dividers using 38"x 46" panels  
Double-sided graphics. Available for rent or purchase



The most efficient solution to easily delimit spaces

Adapting workspaces to the health crisis

Ask for your quote: 1(844)966-3976



SVP

COVID-19  
CORONA VIRUS, POUR SE PROTÉGER  
ET PROTÉGER LES AUTRES



Se laver  
les mains régulièrement  
avec de l'eau et du savon



Utiliser un mouchoir  
à usage unique et le jeter



Éternuer ou tousser  
dans son coude ou dans un mouchoir  
à usage unique



Eviter les contacts  
de proximité

energy  
SERVICE

CO

# 12 Portable changing room kit

- 4 **contour.** 5 x 6.5 foot panels
- + 1 **one.R1** retractable bannerstands
- + 1 **hard case.M** counter



Lightweight and easy to install

Adapting workspaces to the health crisis



Ask for your quote: 1(844)966-3976



# 13 Stationary changing room kit

- 3 38"x 93" panoramic<sup>™</sup> panels
- + 1 **one.R1** retractable bannerstands
- + 1 **hard case.M** counter



Uses the same panels as those in the stationary partition kit

Combine to suit your needs!

Adapting workspaces to the health crisis



Ask for your quote: 1(844)966-3976



# 14 2-desk divider kit

To place between desks

2 lower 38"x 46" frames

+ 2 top 38"x 38" transparent frames



New panoramic<sup>®</sup>  
inline  
transparent half-walls



Adapting workspaces to the health crisis

Ask for your quote: 1(844)966-3976



# 15 4-desk divider kit

To place between desks

6 lower 38"x 46" frames

+ 6 top 38"x 38" transparent frames



New panoramic<sup>®</sup>  
inline  
transparent half-walls

Adapting workspaces to the health crisis

Ask for your quote: 1(844)966-3976

# 16 **contour.** barrier kit

24"x 24" contour structure



Lightweight and easy to move  
contour barrier kit

Sets up within 2 minutes

Available in custom dimensions



Ask for your quote: 1(844)966-3976



# 17 Benefits of our kits and partitions

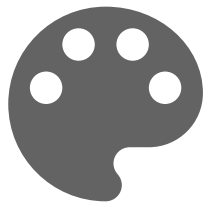
Adapting workspaces to the health crisis



Large quantities **in stock**, available quickly.



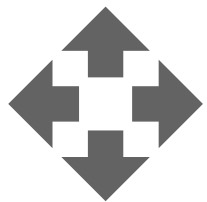
**No training required:** no technical expertise or tools required. **Simple and easy setup.**



Easily create artwork files thanks to a **library of customizable "prevention guidelines" and decor graphics.**



A lasting investment **that can be reused for events after the crisis.**



Arrange all spaces **in a scalable and reusable way.** Available **in custom dimensions.**



Lightweight aluminium frames covered in **changeable, washable fabric.**

**Ask for your quote: 1(844)966-3976**





[www.zone-expo.ca](http://www.zone-expo.ca)